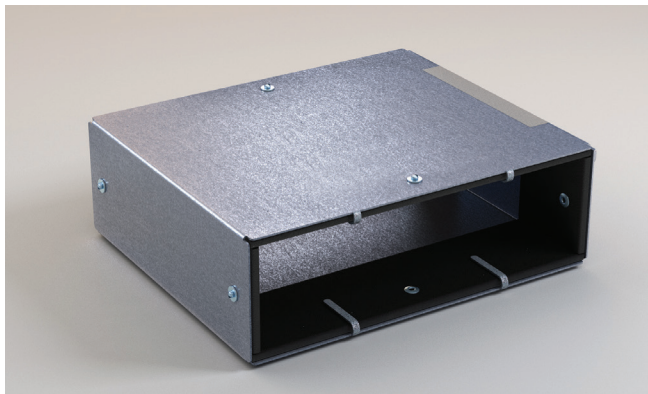


Domus VENTILATION Fire Sleeves

Domus Intumescent Fire Sleeves prevent the spread of fire where Domus rigid ducts penetrate fire compartment walls.



Domus Ventilation Fire Sleeve installed in plasterboard partition

Regulations

Building Regulations impose limitations on all services passing through fire compartment walls. Domus Fire Sleeves allow plastic ducts to meet the requirements of the Building Regulations.

Features & Benefits

- Rectangular profiles tested to BSEN 1366-3: 2009
- Round profile tested to the temperature and pressure conditions of BSEN 1363-1: 1999 and the principles of BSEN 1366-3: 2009
- Tested with Uncapped/Uncapped (U/U) duct configurations as required for ventilation ducts
- Up to 120 minutes fire rating (see page 2 for an exact rating)
- Rectangular profiles are very slimline, saving ceiling space
- Suitable for masonry walls or plasterboard partitions
- Suitable for insulated and non-insulated partitions
- Can be retrofitted
- No mechanical fixings required
- Robust galvanised steel shell
- Performance unaffected by weathering (type x durability)

Composition

The Domus Ventilation Fire Sleeves consist of a flexible galvanised steel shell containing graphite based intumescent material.

They are manufactured to suit Domus 110 x 54mm, 204 x 60mm, 220 x 90mm and Ø100mm, Ø125mm, Ø150mm ducting.

Durability

Tested to Type X durability which means the Fire Sleeves can be installed in conditions exposed to weathering and are expected to last the lifetime of the building.

Application/Installation

The Domus Ventilation Fire Sleeve should be placed around the ventilation duct, positioned centrally within the partition and should be flush or protrude from each face of the wall. The plasterboard should be cut to a tight fit around the Fire Sleeve and any gaps should be sealed with DDSEAL Intumescent Sealant.

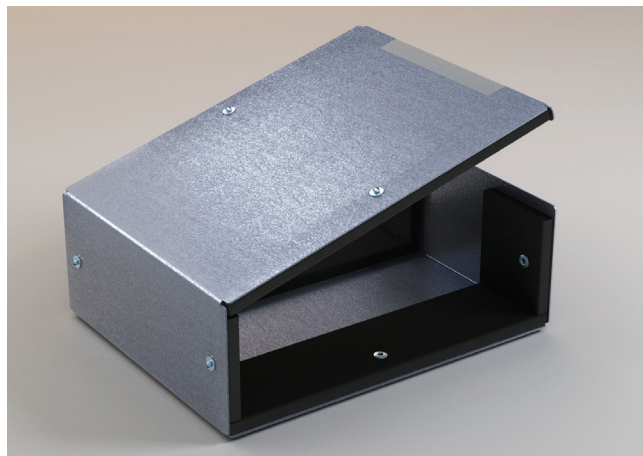


Technical Support and Guidance

Should you require any further information regarding this product, please don't hesitate to contact us on:

Tel: 03443 715 523

Email: vent.sales@domusventilation.co.uk



Product Code	Duct Size	Space Needed Around Duct to Fit the Fire Sleeve	Recommended Aperture	Length	Fire Rating (minutes)
DFS110	110 x 54mm	5mm	122 x 66mm	140mm	120
DFS204	204 x 60mm	5mm	216 x 72mm	140mm	90
DFS220	220 x 90mm	9mm	241 x 112mm	140mm	60
DFS125	Ø125mm	20mm	170mm	180mm	90