

AVAILABLE ON

**i-sells.co.uk**

The UK's Leading Ducting  
And Ventilation Supplier



# **BLAUFAST**



**BLAUFAST** semi-rigid  
air duct system: flexible  
solutions for efficient ventilation



**BLAUBERG**  
Ventilatoren

## SEMI-RIGID AIR DUCTS



The **BLAUFAST** modular air distribution system consists of compact corrugated air ducts with the diameter of 63mm and 75 mm made of impact-resistant plastic.

Energy saving ventilation is easy to achieve with **BLAUFAST**. It is applied in houses and apartments and is suitable both for brand new construction or renovation.

### ENERGY SAVING VENTILATION FOR YOUR HOUSE

The **BLAUFAST** system is designed for use with air Blauberg heat recovery units as part of the radial system.

The **BLAUFAST** system enables good airflow in both extract and supply duct runs, as well as correct air distribution for each room.

In contrast to standard ventilation system to be mounted exclusively in the ceiling or walls the **BLAUFAST** system has wider mounting possibilities.

The air ducts are suitable for ceiling, floor or wall mounting. The assembly is easy and cost-effective.





The flexible air ducts and versatile fittings are designed to make assembly quick and simple.





## SYSTEM DESIGN

The basic system components required are as follows:

- Radial, semi-rigid duct **BLAUFAST RK**.
- Manifold boxes **BLAUFAST SR** allow easy connection between the heat recovery unit and the radial duct work.
- Plenum boxes **BLAUFAST RP** connect air valve, supply and distribution grilles to your radial system.
- Air handling unit with heat recovery Blauberg **KOMFORT** range.
- Solid PVC ducting **BLAUPLAST RR** for effortless connection between the heat recovery unit and the manifolds.
- Cowled, external intake and extract grilles.
- Blanking plates, seals, duct connectors and duct fixing clips.

### EXAMPLE OF THE BLAUFAST SYSTEM



Semi-rigid air duct  
**BLAUFAST RK**



Round flange  
**BLAUFAST RKF**



Lock ring  
**BLAUFAST RS**



Round flange cap  
**BLAUFAST RFP**



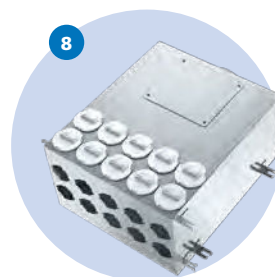
Air distribution box cap  
**BLAUFAST RSP**



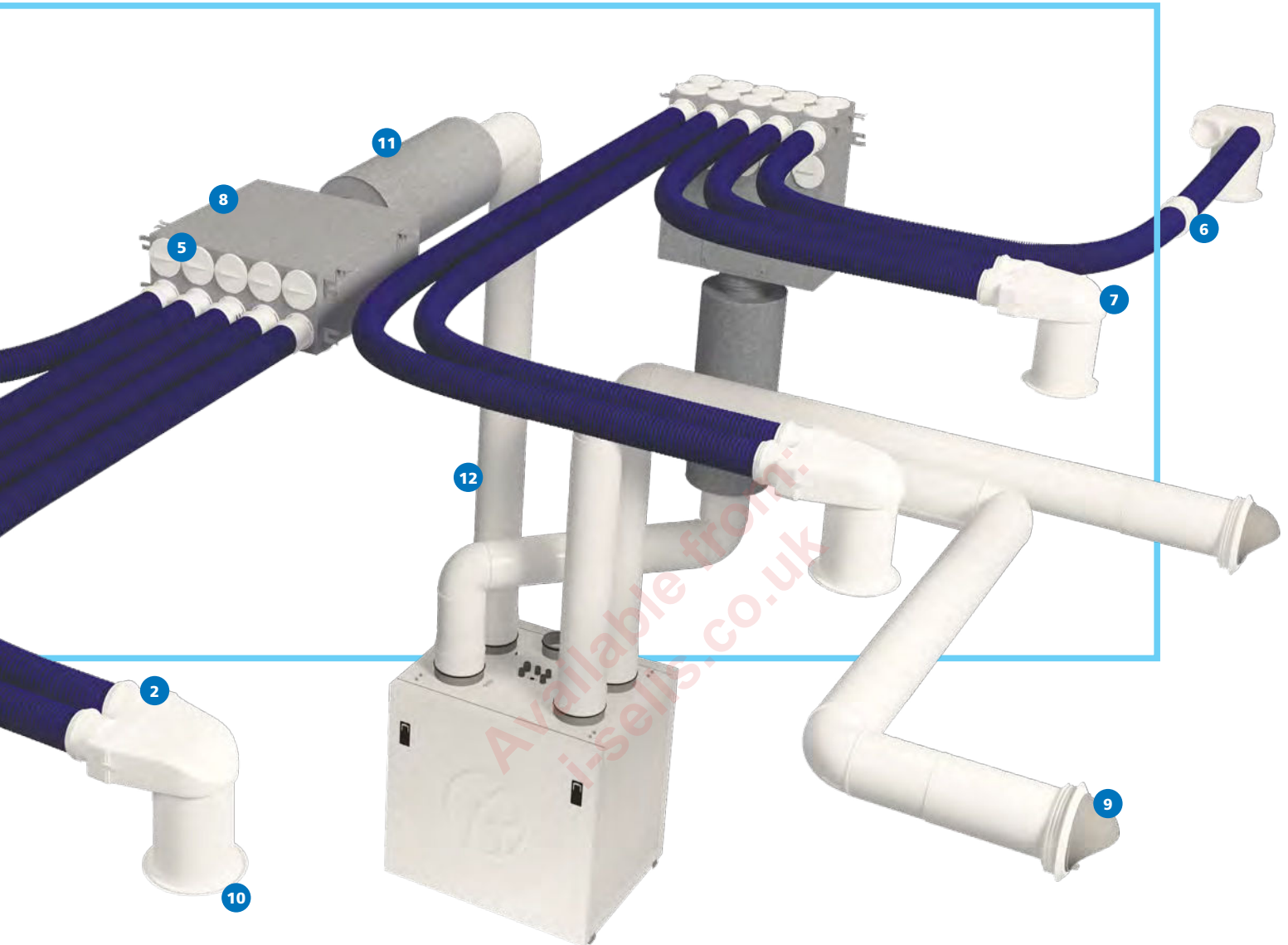
Coupling sleeve  
**BLAUFAST RM**



Ceiling-mounted plastic connector  
**BLAUFAST RPZ**



Metal air distribution box  
**BLAUFAST SR**



Ventilation hood  
**DECOR S...HK**



Air disc valve  
**VPR**

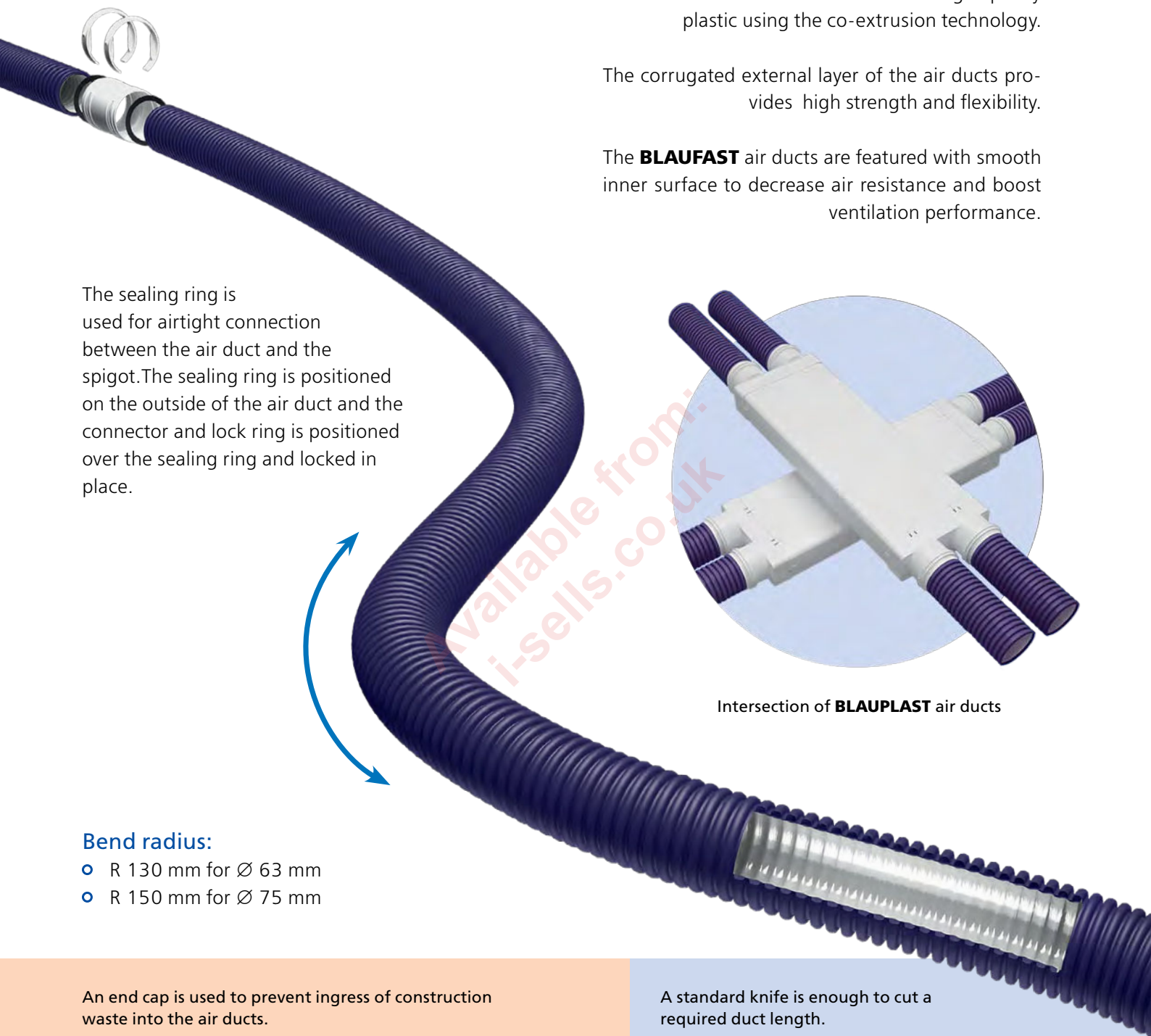


Metal air distribution box  
**BLAUFAST SR**



Round duct  
**BLAUPLAST RR**

## AIR DUCTS



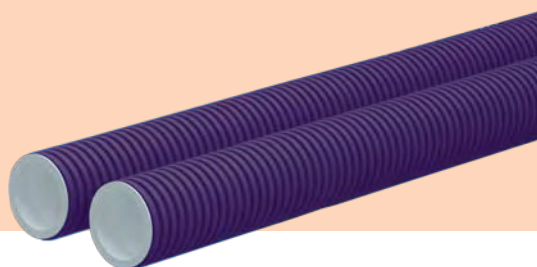
The sealing ring is used for airtight connection between the air duct and the spigot. The sealing ring is positioned on the outside of the air duct and the connector and lock ring is positioned over the sealing ring and locked in place.

### Bend radius:

- R 130 mm for Ø 63 mm
- R 150 mm for Ø 75 mm

Intersection of **BLAUPLAST** air ducts

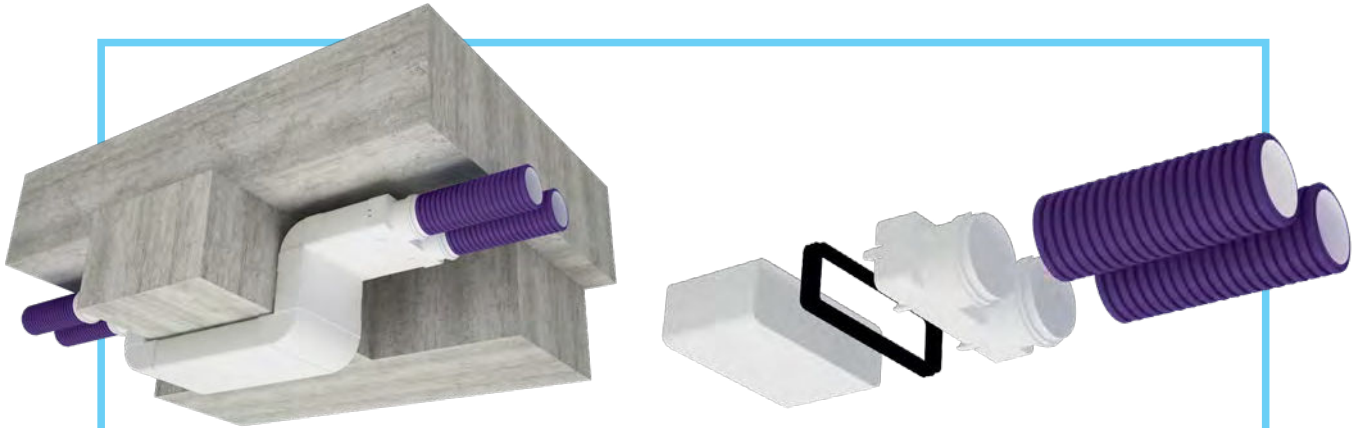
An end cap is used to prevent ingress of construction waste into the air ducts.



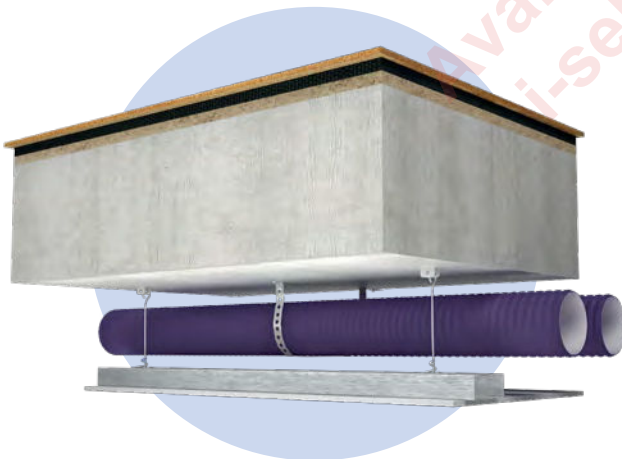
A standard knife is enough to cut a required duct length.



## MOUNTING OPTIONS FOR AIR DUCTS



If a room shape is not suitable for **BLAUFAST** air ducts (inserted floors, partition walls, complicated bends), **BLAUPLAST** system are recommended for use. Connections are made with a coupling sleeve.



In suspended ceilings



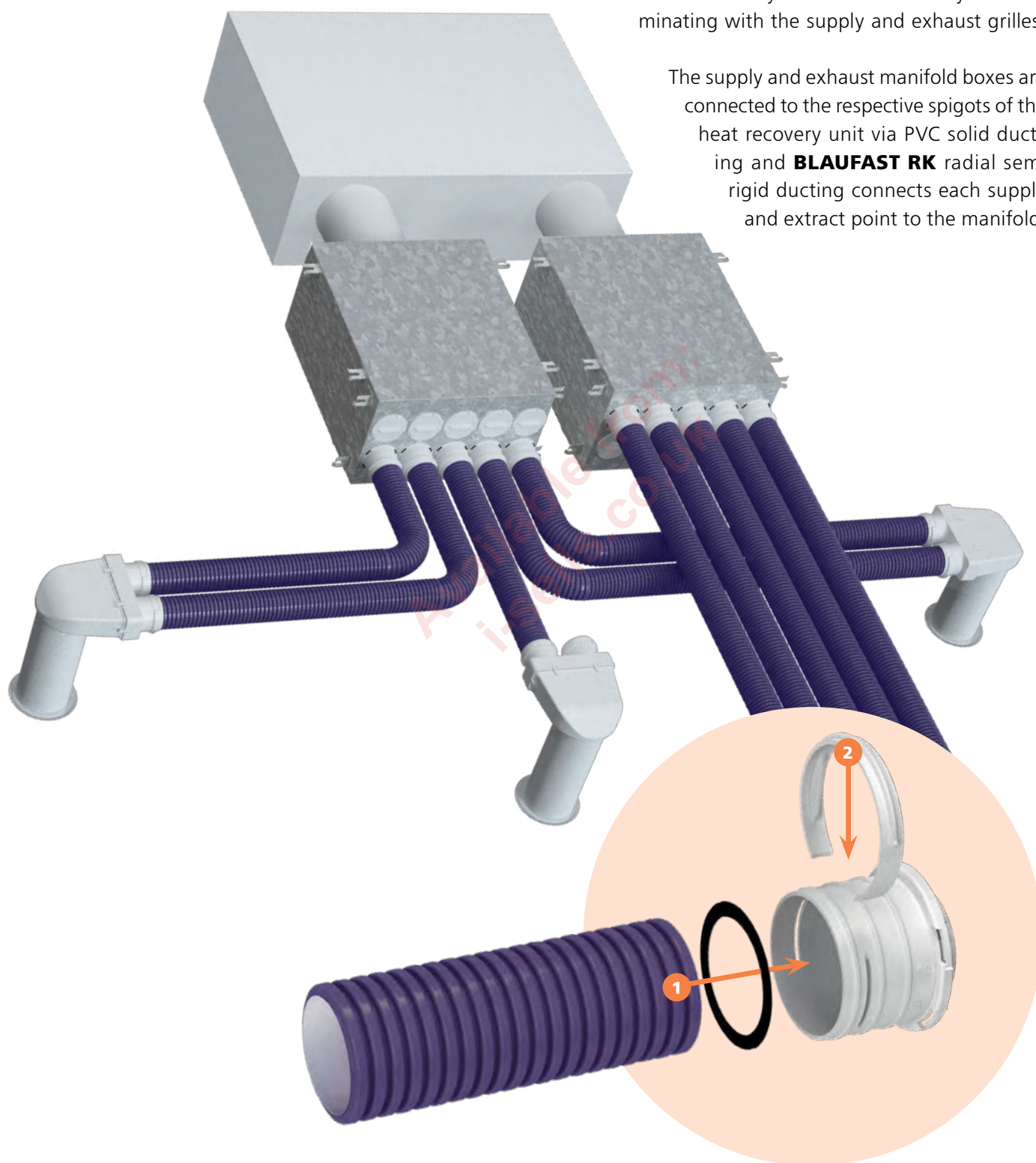
In ceiling voids



## MANIFOLD BOXES

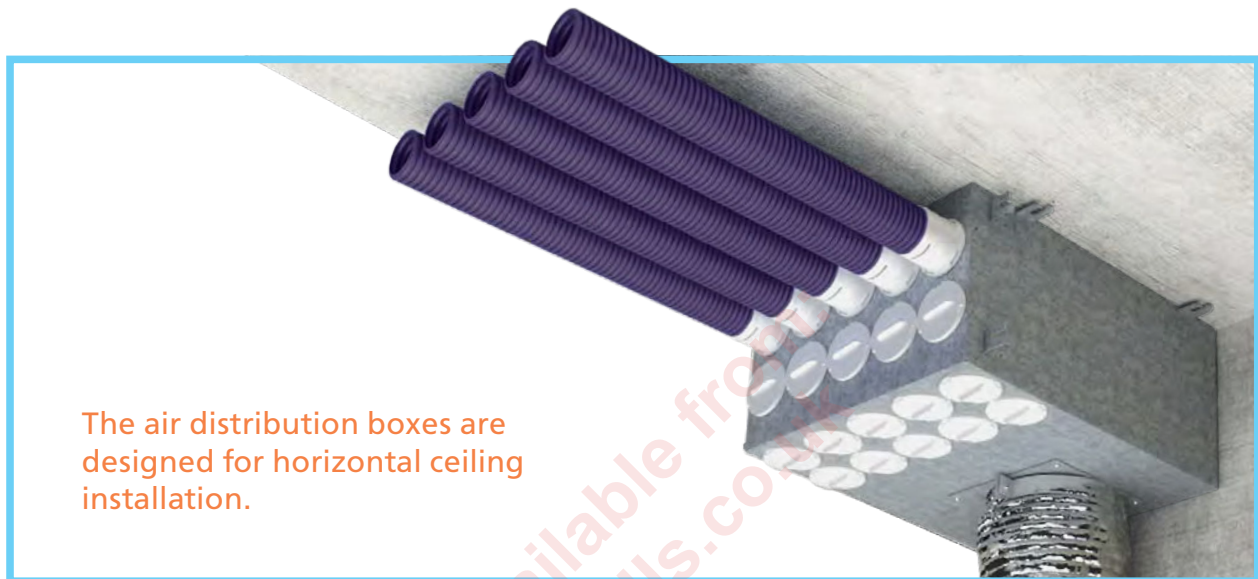
The Manifold boxes form the connection between the heat recovery unit and the radial system terminating with the supply and exhaust grilles.

The supply and exhaust manifold boxes are connected to the respective spigots of the heat recovery unit via PVC solid ducting and **BLAUFAST RK** radial semi rigid ducting connects each supply and extract point to the manifold.

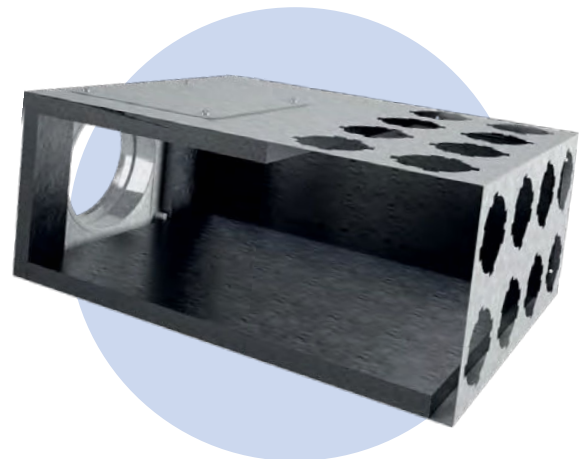




The number of connected **BLAUFAST** radial, semi-rigid air ducts to the manifold box depends on number of Rooms you wish to supply to or extract from and the air capacity of the heat recovery unit. The unused vents of the air distribution box are sealed using blanking pieces.

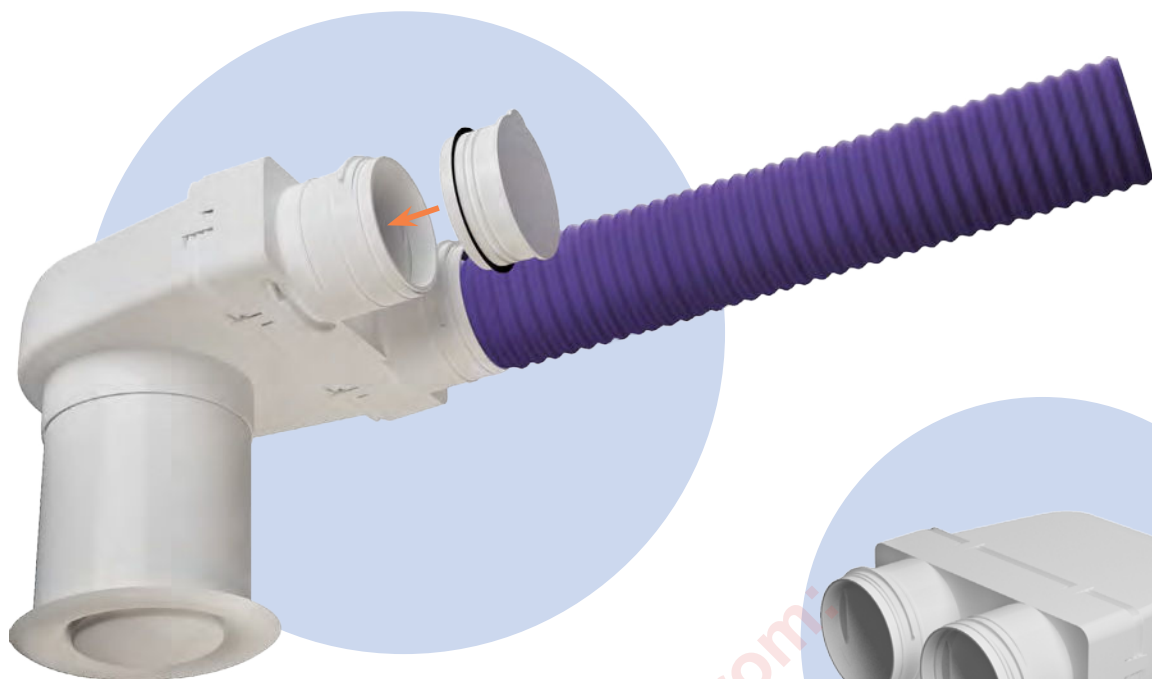


The air ducts are fixed in the spigots with the lock rings. All the system components are rubber sealed in order to make them airtight.

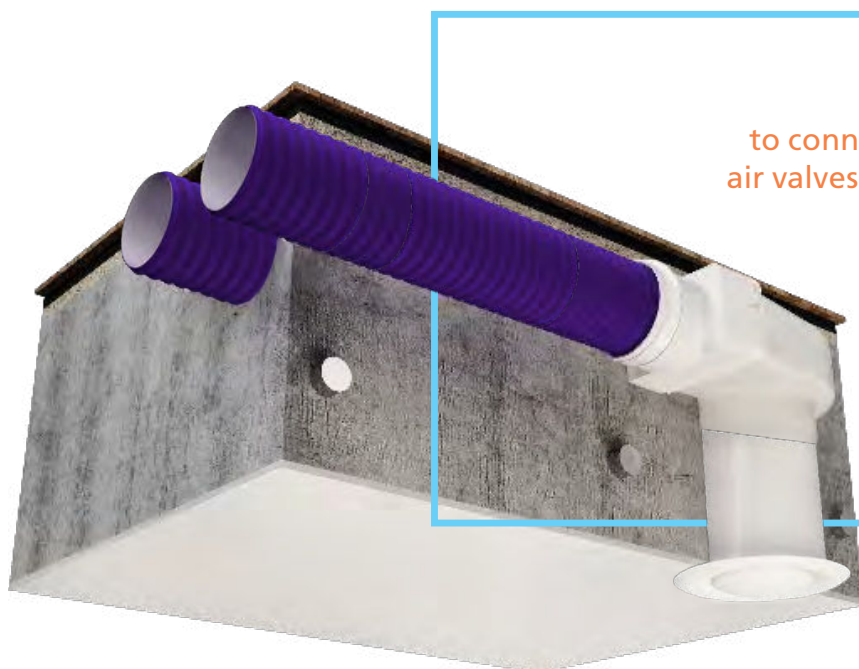
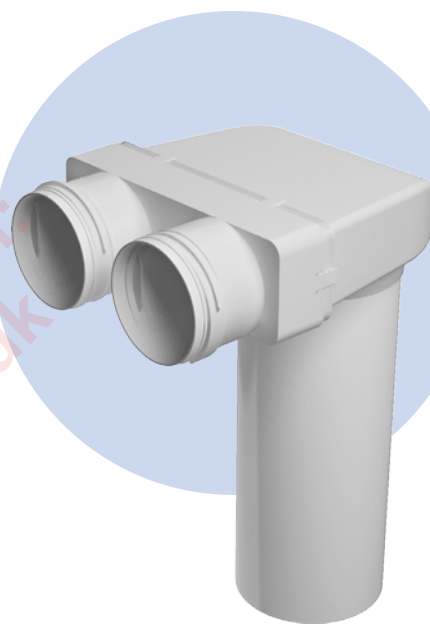


The manifold boxes are internally lined with a 20mm sound insulation layer.

## PLENUMS

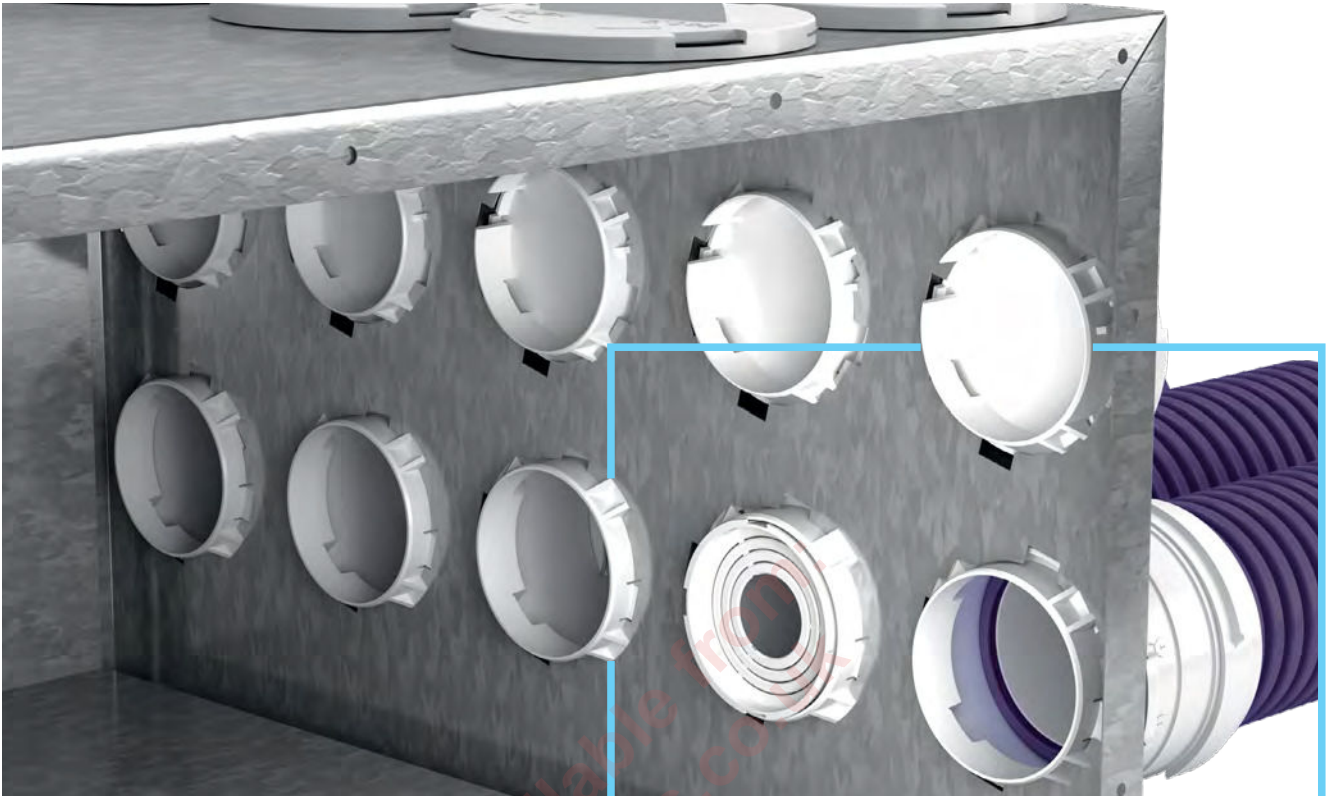


The plenums support either single or double duct runs depending on the air volume that is required at each extract/supply point. When a port is unused it is sealed with a blanking cap



The plenums are used to connect extract and supply air valves to your radial system.

## AIR THROTTLING DAMPERS



The air throttling damper is inserted in the spigot from inside the manifold. Concentric rings can be removed until the desired airflow is achieved.

Air flow regulation can be performed with air throttling dampers

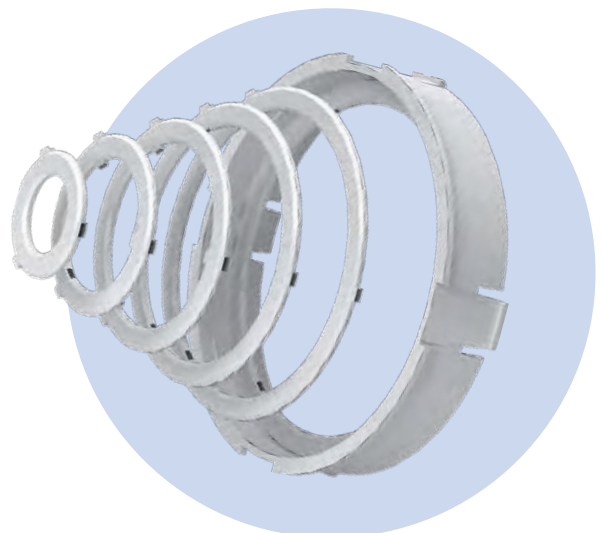
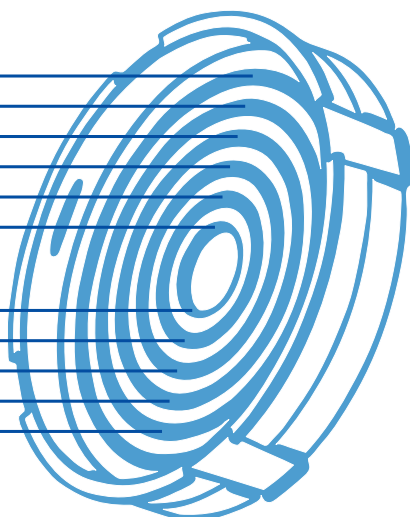
## AIR RESISTANCE LEVELS

### System 75

- 21.0 cm<sup>2</sup>
- 15.0 cm<sup>2</sup>
- 10.0 cm<sup>2</sup>
- 6.0 cm<sup>2</sup>
- 3.0 cm<sup>2</sup>
- 1.0 cm<sup>2</sup>

### System 63

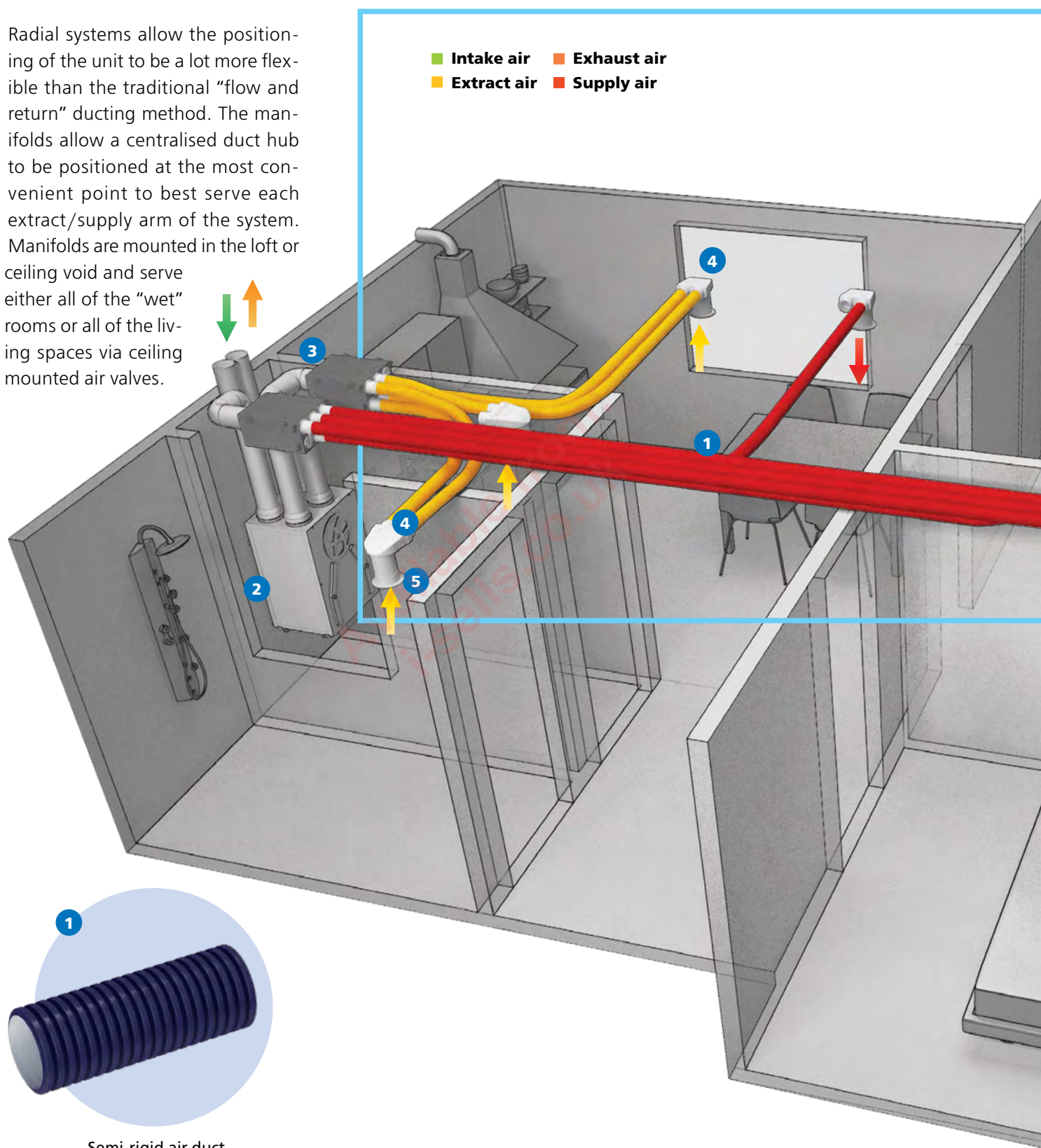
- 0.4 cm<sup>2</sup>
- 2.0 cm<sup>2</sup>
- 4.0 cm<sup>2</sup>
- 7.596 cm<sup>2</sup>
- 12.007 cm<sup>2</sup>





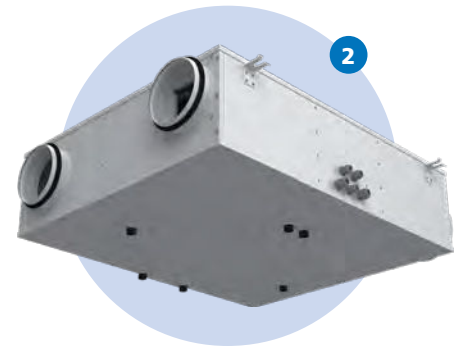
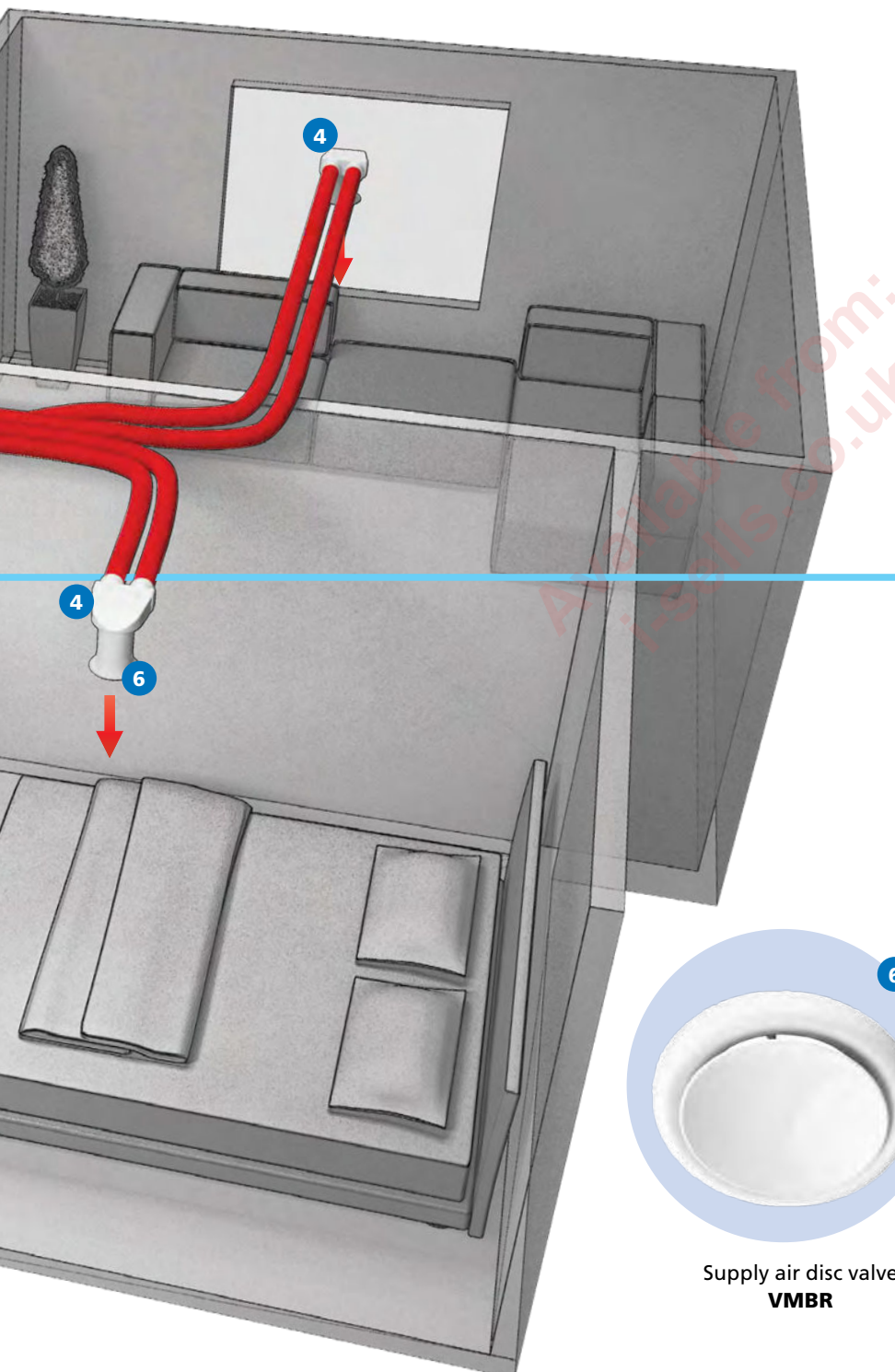
## RADIAL SYSTEM MOUNTING EXAMPLE

Radial systems allow the positioning of the unit to be a lot more flexible than the traditional "flow and return" ducting method. The manifolds allow a centralised duct hub to be positioned at the most convenient point to best serve each extract/supply arm of the system. Manifolds are mounted in the loft or ceiling void and serve either all of the "wet" rooms or all of the living spaces via ceiling mounted air valves.



Semi-rigid air duct  
**BLAUFAST RK**

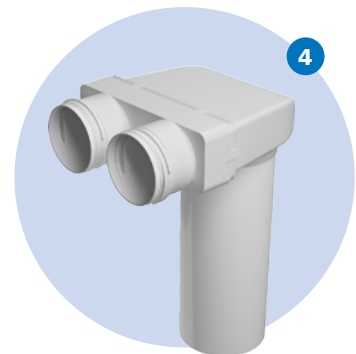
The semi-rigid air ducts **BLAUFAST** are designed to combine simple installation and high airflow performance.



Air handling unit



Metal air distribution box  
**BLAUFAST SR**



Ceiling-mounted metal connector  
**BLAUFAST RPZ**



Supply air disc valve  
**VMBR**



Extract air disc valve  
**VMR**

## TECHNICAL DATA

The calculation of the ventilation system and selection of fittings must be based on local construction norms.\*

		Air flow rate [m³/h]	Air exchange rate per hour
total flat		–	0.4 – 1
per one person		30	–
bathrooms, WC	any ventilation period	60	–
	ventilation period > 12 hours	45	–
toilet	any ventilation period	30	–
	ventilation period > 12 hours	25	–
kitchen	any ventilation period	60	–
	ventilation period > 12 hours	45	–

\* recommended air exchange rate for residential buildings in compliance with DIN 1964.6 and DIN 18017.3

## DUCTS AND ACCESSORIES

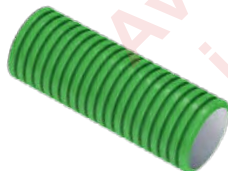
### ROUND AIR DUCT BLAUFAST RK 63/50 BLAUFAST RK 75/50

For supply and exhaust systems in residential premises.

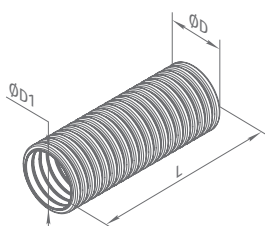


### ROUND ANTIBACTERIAL AND ANTISTATIC AIR DUCT BLAUFAST RK 63/50 01 BLAUFAST RK 75/50 01

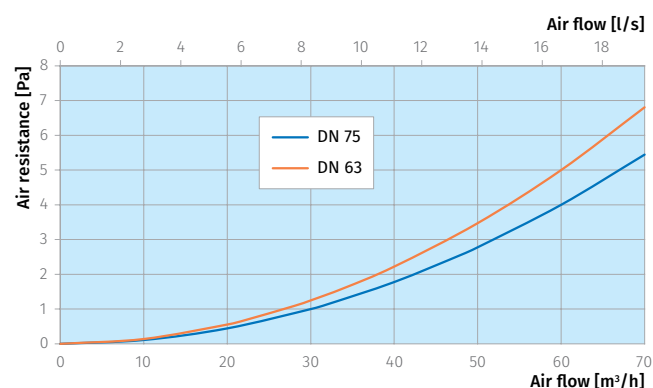
- Made of high-density polyethylene (HDPE).
- Circular density 8 kN/m² in compliance with EN ISO 9969.
- Smooth inner surface for low air resistance and easy cleaning.
- Operation temperature from -20 up to +60 °C.



### ROUND ANTISTATIC AIR DUCT BLAUFAST RK 63/50 02 BLAUFAST RK 75/50 02



	Model	Bend radius [mm]	ØD [mm]	ØD1 [mm]	L [m]
DN63	BlauFast RK 63/50	130	63	51.3	50
DN75	BlauFast RK 75/50	150	75	63.3	50
DN63	BlauFast RK 63/50 01	130	63	51.3	50
DN75	BlauFast RK 75/50 01	150	75	63.3	50
DN63	BlauFast RK 63/50 02	130	63	51.3	50
DN75	BlauFast RK 75/50 02	150	75	63.3	50

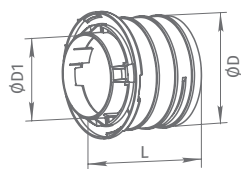


Nominal air duct diameter		DN63			DN75		
Air speed [m/s]		2	2.5	3	2	2.5	3
1 air duct - air flow [m³/h]		15	18	22	22	28	34
2 air ducts - air flow [m³/h]		29	37	44	45	56	67
3 air ducts - air flow [m³/h]		44	55	66	-	-	-
		Air resistance in the air duct [Pa]					
Air duct length [m]	2	0.6	0.9	1.3	1.1	1.7	2.6
	4	1.3	1.8	2.7	2.2	3.5	5.1
	6	1.9	2.7	4.0	3.2	5.2	7.7
	8	2.5	3.6	5.4	4.3	7.0	10.3
	10	3.1	4.5	6.7	5.4	8.7	12.8
	12	3.8	5.4	8.1	6.5	10.5	15.4
	14	4.4	6.3	9.4	7.5	12.2	18.0
	16	5.0	7.2	10.8	8.6	13.9	20.6
	18	5.6	8.1	12.1	9.7	15.7	23.1



## ROUND FLANGE BLAUFAST RKF

For connection of the air ducts to the connectors and air distribution boxes.

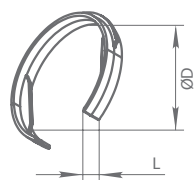


- Fixation of the **BLAUFAST** air duct with the **BLAUFAST RS** lock ring (included in the delivery).
- The **BLAUFAST RL** sealing ring (available as a special accessory) is used to provide airtightness class C.
- Made of polypropylene (PP) with thermoplastic elastomer (SEBS).
- Operation temperature from -20 up to +60 °C.

	Model	ØD [mm]	ØD1 [mm]	L [mm]
DN63	BlauFast RKF 63	74	54	77
DN75	BlauFast RKF 75	86	66	77

## LOCK RING BLAUFAST RS

For fixation of the air duct in the **BLAUFAST RKF** flange.

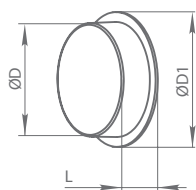


- Made of polypropylene (PP) with thermoplastic elastomer (SEBS).
- Operation temperature from -20 up to +60 °C.

	Model	ØD [mm]	L [mm]
DN63	BlauFast RS 63	69	13
DN75	BlauFast RS 75	84	13

## ROUND DUCT CAP BLAUFAST RKP

For covering of the duct openings.

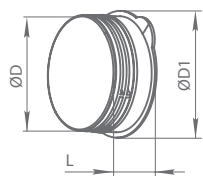


- Made of polypropylene (PP) with thermoplastic elastomer (SEBS).
- Operation temperature from -20 up to +60 °C.

	Model	ØD [mm]	ØD1 [mm]	L [mm]
DN63	BlauFast RKP 63	51.4	63	20
DN75	BlauFast RKP 75	63.2	75	20

## ROUND FLANGE CAP BLAUFAST RFP

For covering of unused flanges in the connectors.

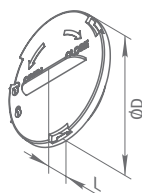


- The **BLAUFAST RL** sealing ring (included in the delivery) is used to provide airtightness class C.
- Made of polypropylene (PP) with thermoplastic elastomer (SEBS).
- Operation temperature from -20 up to +60 °C.

	Model	ØD [mm]	ØD1 [mm]	L [mm]
DN63	BlauFast RFP 63	69	80	30
DN75	BlauFast RFP 75	77	95	32

### AIR DISTRIBUTION BOX CAP BLAUFAST RSP

For covering of unused openings in the air distribution boxes.

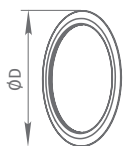


- The **BLAUFAST RL** sealing ring (included in the delivery) is used to provide airtightness class C.
- Made of polypropylene (PP) with thermoplastic elastomer (SEBS).
- Operation temperature from -20 up to +60 °C.

	Model	ØD [mm]	L [mm]
DN63	BlauFast RSP 63	84	29
DN75	BlauFast RSP 75	96	29

### SEALING RING BLAUFAST RL

For sealing of air ducts  
Ø 63 and 75 mm and  
**BLAUFAST RFP** caps.

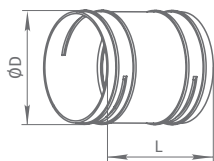


- Made of synthetic rubber.
- Operation temperature from -20 up to +60 °C.

	Model	ØD [mm]
DN63	BlauFast RL 63	67
DN75	BlauFast RL 75	79

### COUPLING SLEEVE BLAUFAST RM

For air supply or air exhaust systems in residential premises.  
For connection of the air ducts.

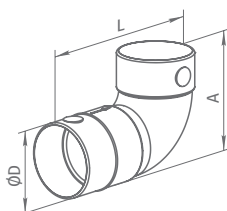


- Fixation of the **BLAUFAST** air duct with the **BLAUFAST RS** lock ring (included in the delivery).
- The **BLAUFAST RL** sealing ring (available as a special accessory) is used to provide airtightness class C.
- Made of polypropylene (PP) with thermoplastic elastomer (SEBS).
- Operation temperature from -20 up to +60 °C.

	Model	ØD [mm]	L [mm]
DN63	BlauFast RM 63	70	95
DN75	BlauFast RM 75	79	95

### ROUND BEND BLAUFAST RB

For connection of the air ducts  
75 mm with the angle of 90°.



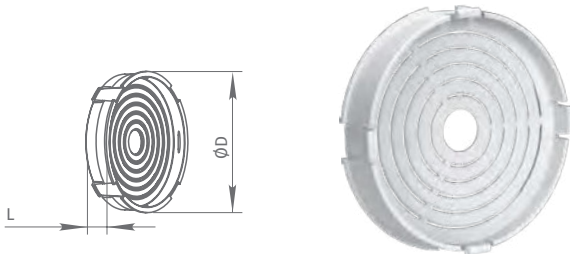
- The **BLAUFAST RL** sealing ring (available as a special accessory) is used to provide airtightness class C.
- Made of PVC.
- Operation temperature from -20 up to +60 °C.

	Model	ØD [mm]	L [mm]	A [mm]
DN75	BlauFast RB 75	78	178	128.7

## ROUND AIR THROTTLING DAMPER BLAUFAST RD

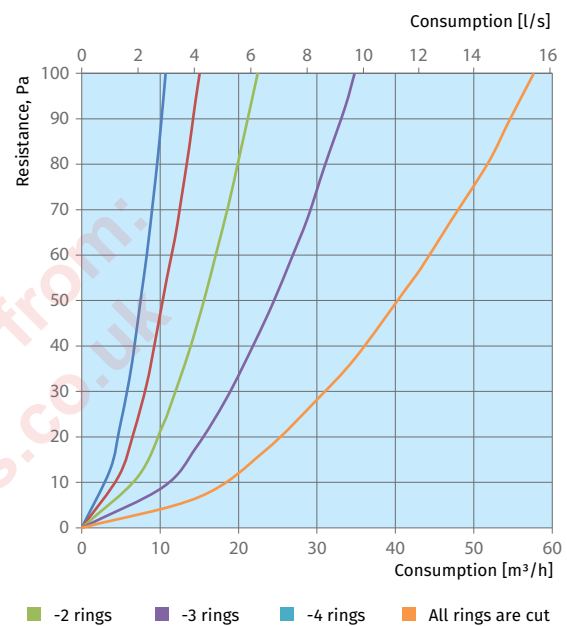
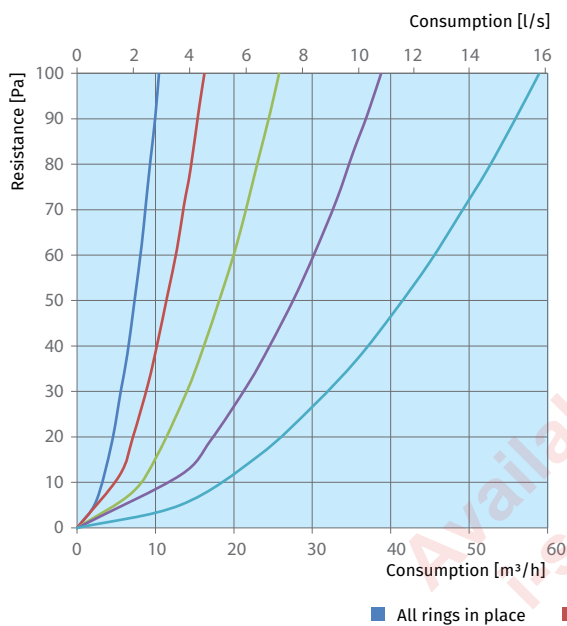
Supply or exhaust ventilation systems of residential spaces.

Adjusting the air flow in the duct.



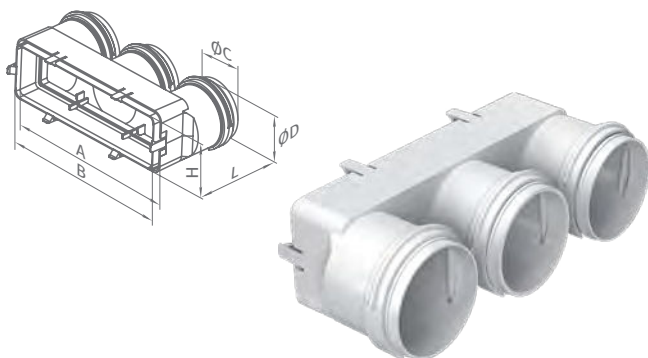
- Inserted in the **BLAUFAST RKF** flanges from inside of the **BLAUFAST SR** air distribution box. Cut away unnecessary rings for air flow regulation.
- Made of polypropylene (PP) with thermoplastic elastomer (SEBS).
- Operation temperature from -20 up to +60 °C.

	Model	ØD [mm]	L [mm]
DN63	BlauFast RD 63	50	14
DN75	BlauFast RD 75	62	14



## COUPLING SLEEVE BLAUFAST MH

For connection of **BLAUFAST** air ducts  
Ø 63 mm and **BLAUPLAST FK** 204x60 mm.



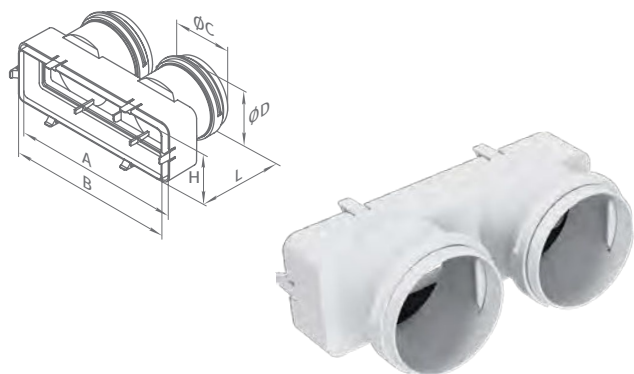
- Made of polypropylene (PP) with thermoplastic elastomer (SEBS).
- Fixation of the **BLAUFAST** duct with the **BLAUFAST RS** lock ring (included in the delivery).
- The **BLAUFAST RL** sealing ring (available as a special accessory) is used to provide airtightness class C.
- Operation temperature from -20 up to +60 °C.

	Model	A [mm]	B [mm]	H [mm]	L [mm]	ØC [mm]	ØD [mm]
DN63	BlauFast MH 63/204x60	217	204	60	104	63	70



## COUPLING SLEEVE BLAUFAST MH

For connection of **BLAUFAST** air ducts  
 $\varnothing$  75 mm and **BLAUPLAST FK** 204x60 mm.



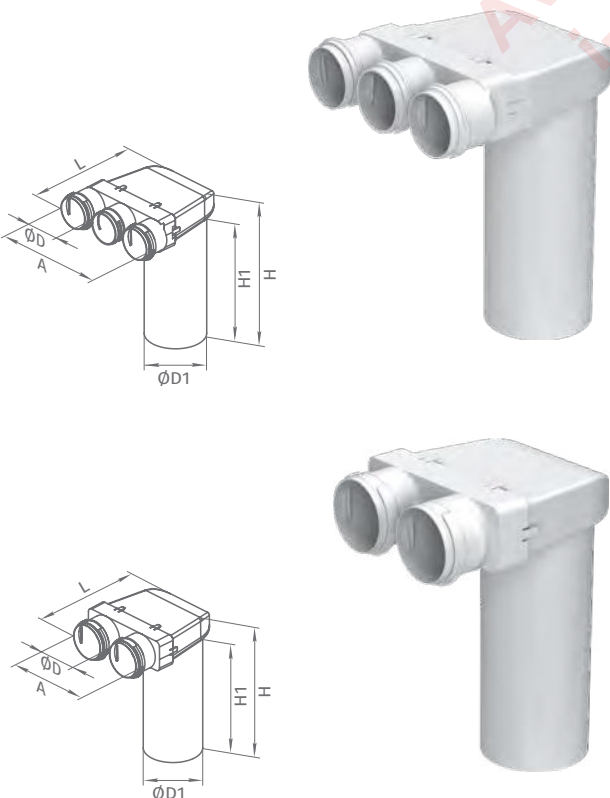
- Fixation of the **BLAUFAST** duct with the **BLAUFAST RS** lock ring (included in the delivery).
- Made of polypropylene (PP) with thermoplastic elastomer (SEBS).
- The **BLAUFAST RL** sealing ring (available as a special accessory) is used to provide airtightness class C.
- Operation temperature from -20 up to +60 °C.

	Model	A [mm]	B [mm]	H [mm]	L [mm]	ØC [mm]	ØD [mm]
DN63	BlauFast MH 75/204x60	217	204	60	98	75	79

## PLASTIC CONNECTORS

### ROUND CEILING MOUNTED CONNECTOR BLAUFAST RPZ

For supply or exhaust ventilation systems  
 of residential spaces.  
 Ceiling mounted.  
 Connecting the ventilation grille to  
 $\varnothing$  63 and 75 mm **BLAUFAST** ducts.



- Made of polypropylene (PP) with thermoplastic elastomer (SEBS).
- Fixation of the **BLAUFAST** air duct with the **BLAUFAST RS** lock ring (included in the delivery).
- The **BLAUFAST RL** sealing ring (available as a special accessory) is used to provide airtightness class C.
- Operation temperature from -20 up to +60 °C.

	Model	ØD [mm]	ØD1 [mm]	L [mm]	A [mm]	H [mm]	H1 [mm]
DN63	BlauFast RPZ 125/63x3	70	128	282	251	367	300
DN75	BlauFast RPZ 125/75x2	82	128	282	218	367	300

BlauFast RPZ 125/63x3

Air capacity [m³/h]	Quantity of connected air ducts	Air supply, air resistance [Pa]	Air exhaust, air resistance [Pa]
25	1	3.0	1.9
50	2	4.5	3.1
75	3	7.0	5.0

BlauFast RPZ 125/75x2

Air capacity [m³/h]	Quantity of connected air ducts	Air supply, air resistance [Pa]	Air exhaust, air resistance [Pa]
30	1	3.2	2.1
60	2	5.4	3.7

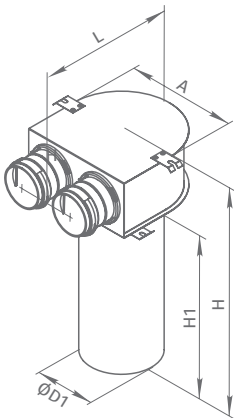
## METAL CONNECTORS

### ROUND CEILING MOUNTED CONNECTOR BLAUFAST RPZ ... M

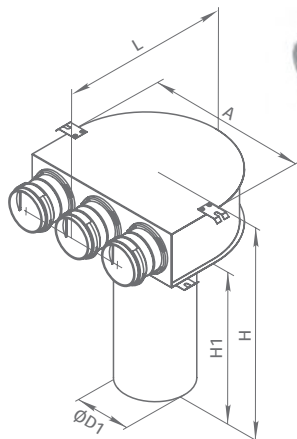
For supply or exhaust ventilation systems of residential spaces.

Ceiling mounted.

Connecting the ventilation grille to Ø 63 and 75 mm **BLAUFAST** ducts.



BlauFast RPZ 125/63x2 M  
BlauFast RPZ 125/75x2 M



BlauFast RPZ 125/63x3 M  
BlauFast RPZ 125/75x3 M

- The connector is made of metal and fitted with polypropylene spigots.
- Fixation of the **BLAUFAST** air duct with the **BLAUFAST RS** lock ring (included in the delivery).
- The **BLAUFAST RL** sealing ring (available as a special accessory) is used to provide airtightness class C.

	Model	ØD1 [mm]	L [mm]	A [mm]	H [mm]	H1 [mm]
DN63	BlauFast RPZ 125/63x2 M	127	195.5	200	401.3	300
DN75	BlauFast RPZ 125/75x2 M	127	195.5	200	401.3	300
DN63	BlauFast RPZ 125/63x3 M	127	245.1	300	401.3	300
DN75	BlauFast RPZ 125/75x3 M	127	309.4	300	401.3	300

BlauFast RPZ 125/63x2 M

Air capacity [m³/h]	Quantity of connected air ducts	Air supply, air resistance [Pa]	Air exhaust, air resistance [Pa]
25	1	3.0	1.9
50	2	4.5	3.1

BlauFast RPZ 125/75x2 M

Air capacity [m³/h]	Quantity of connected air ducts	Air supply, air resistance [Pa]	Air exhaust, air resistance [Pa]
30	1	3.2	2.1
60	2	5.4	3.7

BlauFast RPZ 125/63x3 M

Air capacity [m³/h]	Quantity of connected air ducts	Air supply, air resistance [Pa]	Air exhaust, air resistance [Pa]
25	1	3.0	1.9
50	2	4.5	3.1
75	3	7.0	5.0

BlauFast RPZ 125/63x3 M

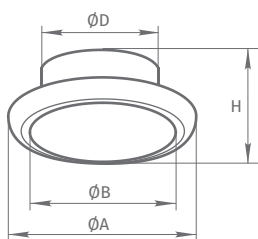
Air capacity [m³/h]	Quantity of connected air ducts	Air supply, air resistance [Pa]	Air exhaust, air resistance [Pa]
25	1	3.0	1.9
50	2	4.5	3.1
75	3	7.0	5.0

## GRILLES

### AIR DISC VALVE VMBR 125

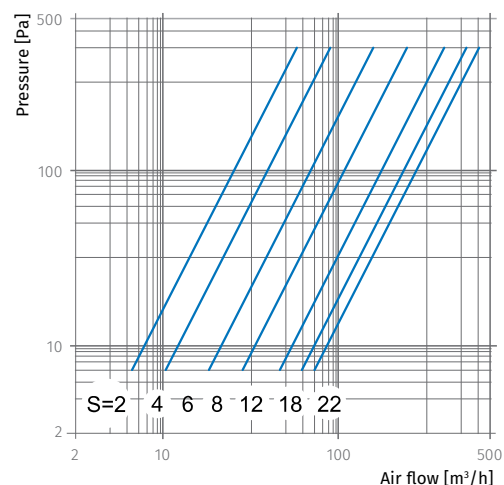
Supply ventilation systems of residential spaces.

Installed into wall-mounted connectors.



Model	ØA [mm]	ØB [mm]	ØD [mm]	ØH [mm]
VMBR 125	166	110	20	124

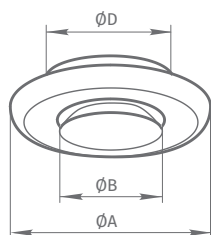
- Made of polymer-coated steel
- Smooth air flow regulation.



### AIR DISC VALVE VMR 125

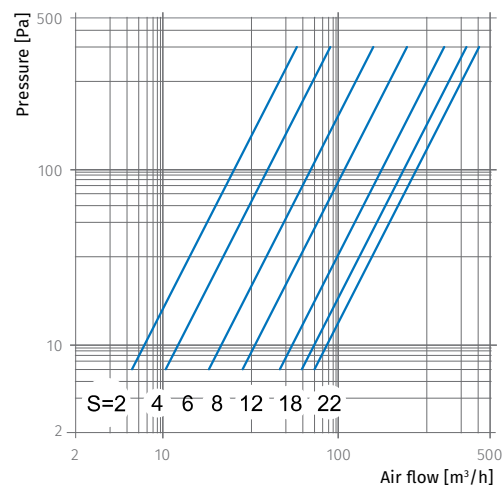
Extract ventilation systems of residential spaces.

Installed into wall-mounted connectors.



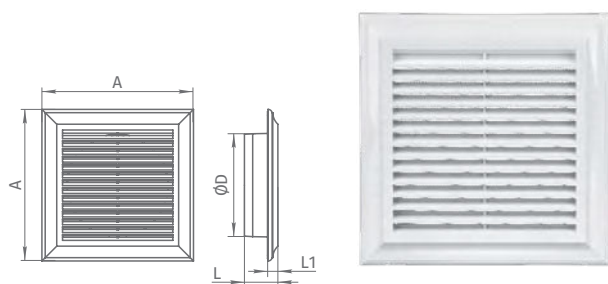
Model	ØA [mm]	ØB [mm]	ØD [mm]
VMR 125	154	100	124

- Made of polymer-coated steel
- Infinitely adjustable airflow.



## SQUARE GRILLES DECOR 180X180/125S

Supply or exhaust ventilation systems of residential spaces.  
For installation in ceiling connector.

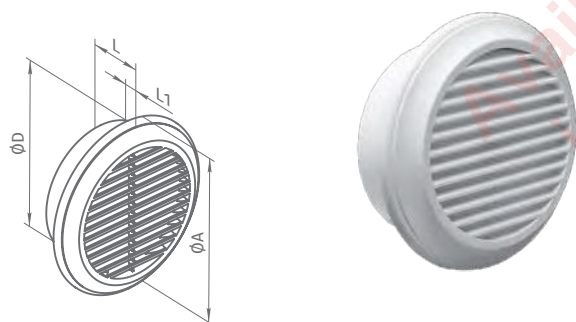


- Made of antistatic ABS plastic or polystyrene.
- Fixation with screws.
- Equipped with an insect screen.

Model	A [mm]	L [mm]	L1 [mm]	ØD [mm]	Air flow pass [m²]
Decor 180x180/125s	180	40.6	12.6	125	0.0059

## ROUND GRILLE DECOR 125S

Supply or exhaust ventilation systems of residential spaces.  
For installation in ceiling connector.



- Made of antistatic ABS plastic or polystyrene.
- Fixation with screws.
- Equipped with an insect screen.

Model	ØA [mm]	L [mm]	L1 [mm]	ØD [mm]	Air flow pass [m²]
Decor 125s	165	42	14	125	0.0073

## GRILLE TECHNICAL DATA

		Air speed in the air duct [m/s]					
		0.5	1	1.5	2	2.5	3
Grille model	Air flow pass [m²]	Air flow [m³/h]					
BlauFast GF 300x100 03	0.0107	19	39	58	77	96	106
BlauFast GF 300x100 07	0.0132	24	48	71	95	119	143
BlauFast GW 200x55 01	0.0069	12	25	37	50	62	75
BlauFast GW 300x55 01	0.0155	28	56	84	112	140	168
Decor 180x180/125s	0.0059	11	21	32	42	53	64
Decor 125s	0.0073	13	26	39	53	66	79



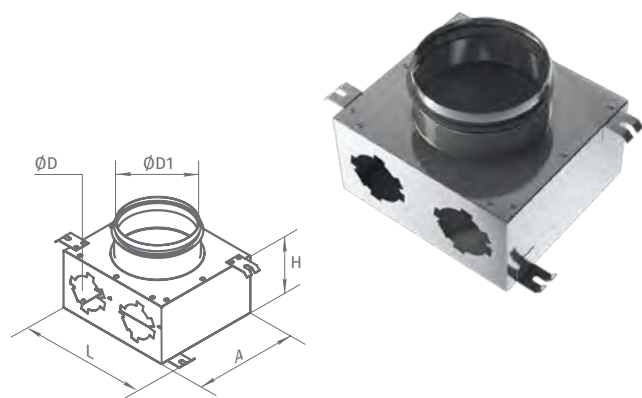
## AIR DISTRIBUTION BOXES

### METAL AIR DISTRIBUTION BOX

#### BLAUFAST SR 125/..X2 01

Supply or exhaust ventilation systems of residential spaces.

For distribution of air from the ventilation unit through the air ducts.



- Made of aluzinc coated steel.
- The main air duct flange is rubber sealed.
- Air duct connection through matching flanges **BLAUFAST RKF** (available as special accessories).
- Unused openings must be capped with **BLAUFAST RSP**.

	Model	ØD [mm]	ØD1 [mm]	L [mm]	A [mm]	H [mm]
DN63	BlauFast SR 125/63x2 01	54.5	124	196	178	100
DN75	BlauFast SR 125/75x2 01	67	124	196	178	100

BlauFast SR 125/63x2 01

Air capacity [m³/h]	Quantity of connected air ducts	Air supply, air resistance [Pa]	Air exhaust, air resistance [Pa]
25	1	2.9	1.8
50	2	4.3	2.8

BlauFast SR 125/75x2 01

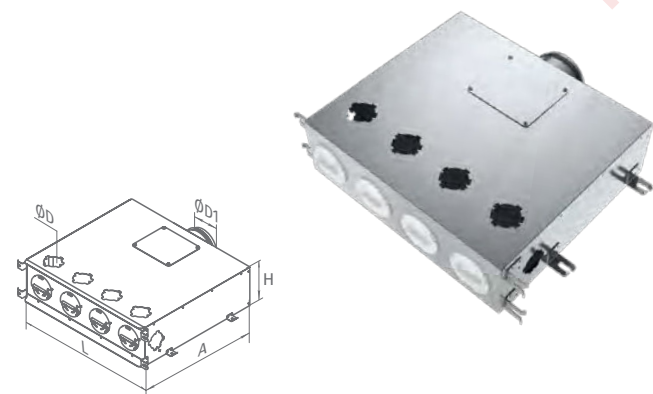
Air capacity [m³/h]	Quantity of connected air ducts	Air supply, air resistance [Pa]	Air exhaust, air resistance [Pa]
30	1	3.1	2.0
60	2	5.1	3.4

### METAL AIR DISTRIBUTION BOX

#### BLAUFAST SR 125/..X6 01

Supply or exhaust ventilation systems of residential spaces.

For distribution of air from the ventilation unit through the air ducts.



- Made of aluzinc coated steel.
- The main air duct flange is rubber sealed.
- Air duct connection through matching flanges **BLAUFAST RKF** (available as special accessories).
- Unused openings must be capped with **BLAUFAST RSP**.
- Internally sound-insulated.

	Model	ØD [mm]	ØD1 [mm]	L [mm]	A [mm]	H [mm]
DN63	BlauFast SR 125/63x6 01	54.5	124	554	470	162
DN75	BlauFast SR 125/75x6 01	67	124	554	470	162

BlauFast SR 125/63x6 01

Air capacity [m³/h]	Quantity of connected air ducts	Air supply, air resistance [Pa]	Air exhaust, air resistance [Pa]
25	1	2.6	1.6
50	2	2.9	1.9
75	3	3.4	2.3
100	4	4.1	2.9
125	5	5.0	3.8
150	6	6.1	4.7

BlauFast SR 125/75x6 01

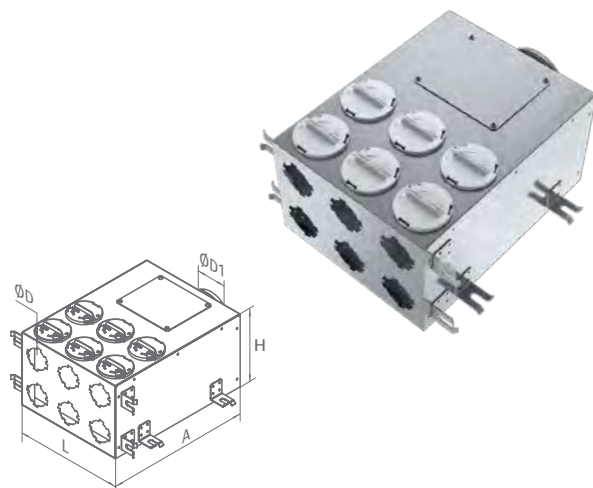
Air capacity [m³/h]	Quantity of connected air ducts	Air supply, air resistance [Pa]	Air exhaust, air resistance [Pa]
30	1	2.6	1.6
60	2	3.1	2.0
90	3	3.8	2.7
120	4	4.8	3.6
150	5	6.1	4.7
180	6	7.7	6.2

## METAL AIR DISTRIBUTION BOX

### BLAUFAST SR 125/..X6 02

Supply or exhaust ventilation systems of residential spaces.

For distribution of air from the ventilation unit through the air ducts.



- Made of aluzinc coated steel.
- The main air duct flange is rubber sealed.
- Air duct connection through matching flanges **BLAUFAST RKF** (available as special accessories).
- Unused openings must be capped with **BLAUFAST RSP**.
- Internally sound-insulated.

	Model	ØD [mm]	ØD1 [mm]	L [mm]	A [mm]	H [mm]
DN63	BlauFast SR 125/63x6 02	54.5	124	300	400	202
DN75	BlauFast SR 125/75x6 02	67	124	300	400	202

BlauFast SR 125/63x6 02

Air capacity [m³/h]	Quantity of connected air ducts	Air supply, air resistance [Pa]	Air exhaust, air resistance [Pa]
25	1	2.6	1.6
50	2	2.8	1.8
75	3	3.2	2.1
100	4	3.8	2.6
125	5	4.5	3.3
150	6	5.4	4.0

BlauFast SR 125/75x6 02

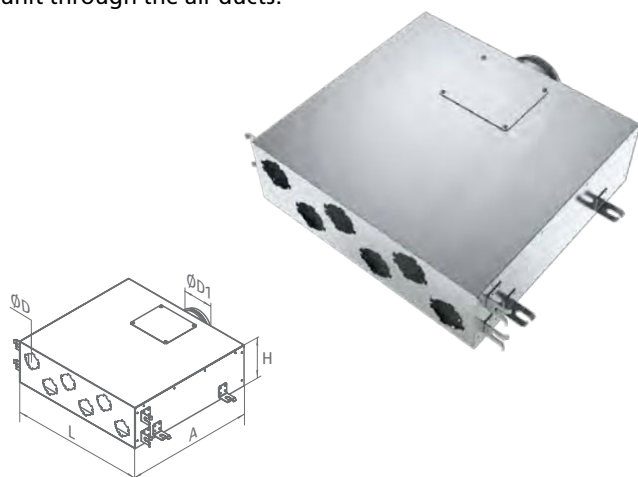
Air capacity [m³/h]	Quantity of connected air ducts	Air supply, air resistance [Pa]	Air exhaust, air resistance [Pa]
30	1	2.6	1.6
60	2	3.0	1.9
90	3	3.5	2.4
120	4	4.3	3.1
150	5	5.4	4.0
180	6	6.6	5.1

## METAL AIR DISTRIBUTION BOX

### BLAUFAST SR 125/..X6 03

Supply or exhaust ventilation systems of residential spaces.

For distribution of air from the ventilation unit through the air ducts.



- Made of aluzinc coated steel.
- The main air duct flange is rubber sealed.
- Air duct connection through matching flanges **BLAUFAST RKF** (available as special accessories).
- Unused openings must be capped with **BLAUFAST RSP**.
- Internally sound-insulated.

	Model	ØD [mm]	ØD1 [mm]	L [mm]	A [mm]	H [mm]
DN63	BlauFast SR 125/63x6 03	54.5	124	530	500	162
DN75	BlauFast SR 125/75x6 03	65	124	530	500	162

BlauFast SR 125/63x6 03

Air capacity [m³/h]	Quantity of connected air ducts	Air supply, air resistance [Pa]	Air exhaust, air resistance [Pa]
25	1	2.6	1.6
50	2	2.8	1.8
75	3	3.2	2.1
100	4	3.8	2.6
125	5	4.5	3.3
150	6	5.4	4.0

BlauFast SR 125/75x6 03

Air capacity [m³/h]	Quantity of connected air ducts	Air supply, air resistance [Pa]	Air exhaust, air resistance [Pa]
30	1	2.6	1.6
60	2	3.0	1.9
90	3	3.5	2.4
120	4	4.3	3.1
150	5	5.4	4.0
180	6	6.6	5.1

## METAL AIR DISTRIBUTION BOX BLAUFast SR 160/..X8 01

Supply or exhaust ventilation systems of residential spaces.

For distribution of air from the ventilation unit through the air ducts.



- Made of aluzinc coated steel.
- The main air duct flange is rubber sealed.
- Air duct connection through matching flanges **BLAUFast RKF** (available as special accessories).
- Unused openings must be capped with **BLAUFast RSP**.

	Model	ØD [mm]	ØD1 [mm]	L [mm]	A [mm]	H [mm]
DN75	BlauFast SR 150/75x8 01	67	149	400	200	100
DN63	BlauFast SR 160/63x8 01	54.5	159	400	200	100
DN75	BlauFast SR 160/75x8 01	65	159	400	200	100

BlauFast SR 150/75x8 01

Air capacity [m³/h]	Quantity of connected air ducts	Air supply, air resistance [Pa]	Air exhaust, air resistance [Pa]
30	1	2.7	1.7
60	2	3.2	2.1
90	3	4.0	2.9
120	4	5.1	3.9
150	5	6.6	5.3
180	6	8.5	6.9
210	7	10.6	8.9
240	8	13.1	11.2

BlauFast SR 160/63x8 01

Air capacity [m³/h]	Quantity of connected air ducts	Air supply, air resistance [Pa]	Air exhaust, air resistance [Pa]
25	1	2.6	1.6
50	2	3.0	1.9
75	3	3.5	2.4
100	4	4.3	3.2
125	5	5.4	4.1
150	6	6.6	5.3
175	7	8.1	6.6
200	8	9.9	8.2

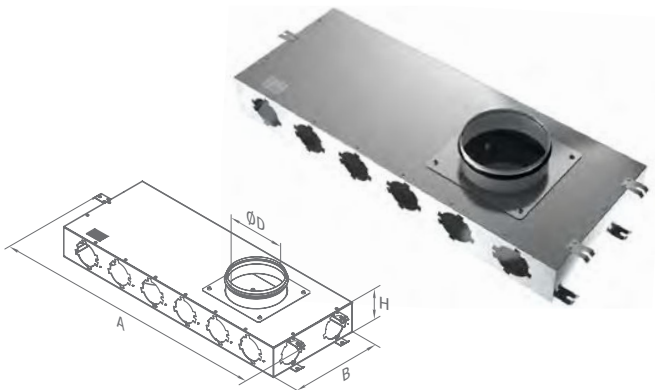
BlauFast SR 160/75x8 01

Air capacity [m³/h]	Quantity of connected air ducts	Air supply, air resistance [Pa]	Air exhaust, air resistance [Pa]
30	1	2.7	1.7
60	2	3.2	2.1
90	3	4.0	2.9
120	4	5.1	3.9
150	5	6.6	5.3
180	6	8.5	6.9
210	7	10.6	8.9
240	8	13.1	11.2

## METAL AIR DISTRIBUTION BOX BLAUFAST SR 160/75X8 02

Supply or exhaust ventilation systems of residential spaces.

To distribute air from the air handling unit.



- The main air duct flange is sealed with a rubber gasket.
- The flanges are not included.
- Made of steel with aluzinc coating.

	Model	A [mm]	B [mm]	ØD [mm]	H [mm]
DN75	BlauFast SR 160/75x8 02	827.9	290	165	90

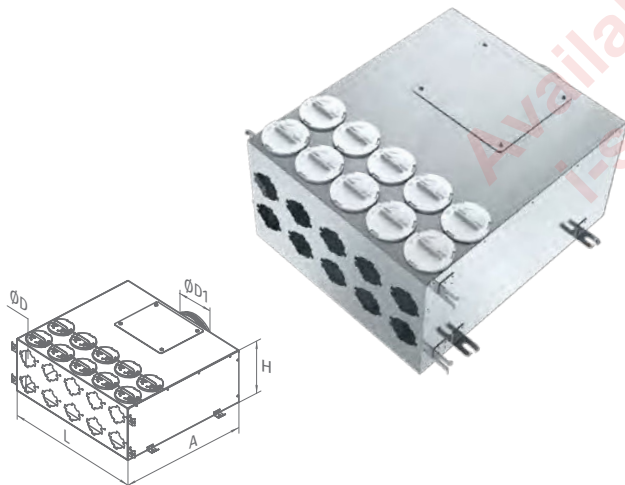
BlauFast SR 160/75x8 02

Air capacity [m³/h]	Quantity of connected air ducts	Air supply, air resistance [Pa]	Air exhaust, air resistance [Pa]
30	1	2.7	1.7
60	2	3.2	2.1
90	3	4.0	2.9
120	4	5.1	3.9
150	5	6.6	5.3
180	6	6.9	6.9
210	7	8.9	8.9
240	8	11.2	11.2

## METAL AIR DISTRIBUTION BOX BLAUFAST SR 160/..X10 01

Supply or exhaust ventilation systems of residential spaces.

For distribution of air from the ventilation unit through the air ducts.



- Made of aluzinc coated steel.
- The main air duct flange is rubber sealed.
- Air duct connection through matching flanges **BLAUFAST RKF** (available as special accessories).
- Unused openings must be capped with **BLAUFAST RSP**.
- Internally sound-insulated.

	Model	ØD [mm]	ØD1 [mm]	L [mm]	A [mm]	H [mm]
DN63	BlauFast SR 160/63x10 01	54.5	159	500	500	202
DN75	BlauFast SR 160/75x10 01	67	159	500	500	202

BlauFast SR 160/63x10 01

Air capacity [m³/h]	Quantity of connected air ducts	Air supply, air resistance [Pa]	Air exhaust, air resistance [Pa]
25	1	2.6	1.6
50	2	2.8	1.8
75	3	3.2	2.1
100	4	3.8	2.6
125	5	4.5	3.3
150	6	5.4	4.0
175	7	6.4	4.9
200	8	7.6	6.0
225	9	9.0	7.2
250	10	10.5	8.5

BlauFast SR 160/75x10 01

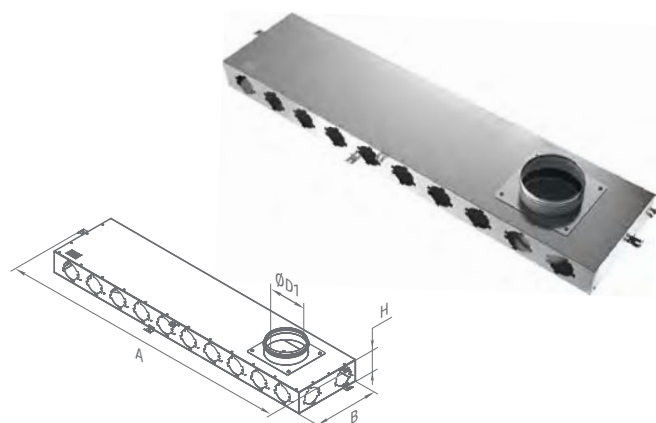
Air capacity [m³/h]	Quantity of connected air ducts	Air supply, air resistance [Pa]	Air exhaust, air resistance [Pa]
30	1	2.6	1.6
60	2	3.0	1.9
90	3	3.5	2.4
120	4	4.3	3.1
150	5	5.4	4.0
180	6	6.6	5.1
210	7	8.1	6.4
240	8	9.9	8.0
270	9	11.8	9.7
300	10	14.0	11.6



### METAL AIR DISTRIBUTION BOX BLAUFAST SR 160/75X12 01

Supply or exhaust ventilation systems of residential spaces.

Distribution of air from the ventilation unit through the ducts.



- The main air duct flange is sealed with a rubber gasket.
- The flanges are not included.
- Made of steel with aluzinc coating.

	Model	A [mm]	B [mm]	ØD [mm]	H [mm]
DN75	BlauFast SR 160/75x12 01	1307.9	290	160	107

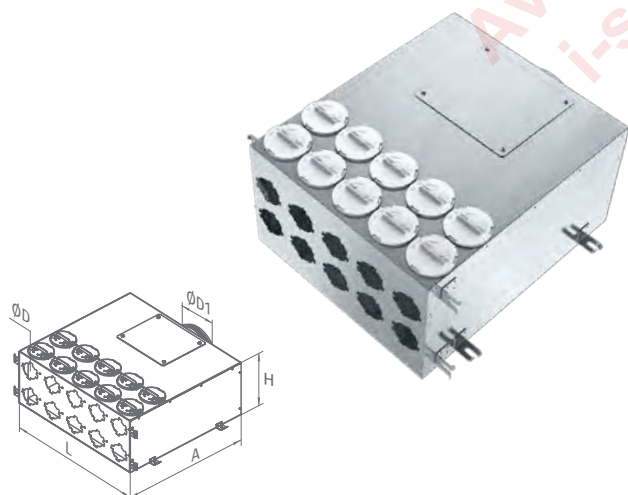
BlauFast SR 160/75x12 01

Air capacity [m³/h]	Quantity of connected air ducts	Air supply, air resistance [Pa]	Air exhaust, air resistance [Pa]
30	1	2.6	1.6
60	2	3.0	1.9
90	3	3.5	2.4
120	4	4.3	3.1
150	5	5.4	4.0
180	6	6.6	5.1
210	7	8.1	6.4
240	8	9.9	8.0
270	9	11.8	9.7
300	10	14.0	11.6
330	11	22.5	19.8
360	12	26.6	23.3

### METAL AIR DISTRIBUTION BOX BLAUFAST SR 200/..X10 01

Supply or exhaust ventilation systems of residential spaces.

Distribution of air from the ventilation unit through the ducts.



- The main air duct flange is sealed with a rubber gasket.
- Made of steel with aluzinc coating.
- Internal sound insulation layer.

	Model	ØD [mm]	ØD1 [mm]	L [mm]	A [mm]	H [mm]
DN63	BlauFast SR 200/63x15 01	55	199	500	600	302
DN75	BlauFast SR 200/75x15 01	67	199	500	600	302

BlauFast SR 200/63x10 01

Air capacity [m³/h]	Quantity of connected air ducts	Air supply, air resistance [Pa]	Air exhaust, air resistance [Pa]
25	1	2.6	1.6
50	2	2.8	1.8
75	3	3.2	2.1
100	4	3.8	2.6
125	5	4.5	3.3
150	6	5.4	4.0
175	7	6.4	4.9
200	8	7.6	6.0
225	9	9.0	7.2
250	10	10.5	8.5

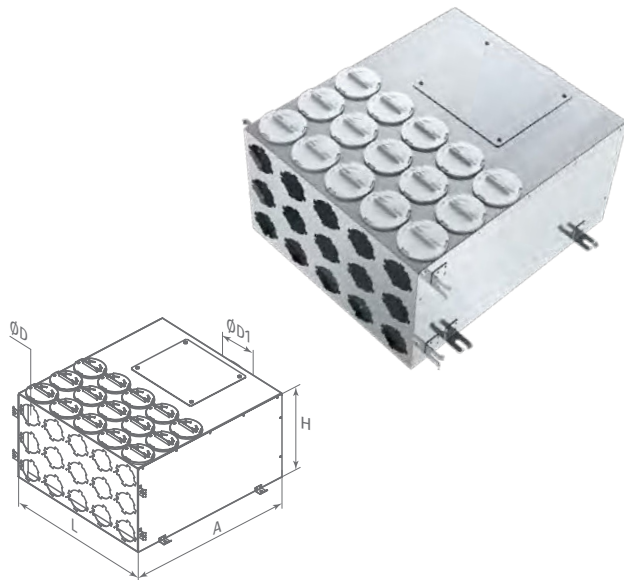
BlauFast SR 200/75x10 01

Air capacity [m³/h]	Quantity of connected air ducts	Air supply, air resistance [Pa]	Air exhaust, air resistance [Pa]
25	1	2.6	1.6
50	2	2.8	1.8
75	3	3.2	2.1
100	4	3.8	2.6
125	5	4.5	3.3
150	6	5.4	4.0
175	7	6.4	4.9
200	8	7.6	6.0
225	9	9.0	7.2
250	10	10.5	8.5

## METAL AIR DISTRIBUTION BOX BLAUFAST SR 200/..X15 01

Supply or exhaust ventilation systems of residential spaces.

For distribution of air from the ventilation unit through the air ducts.



- Made of aluzinc coated steel.
- The main air duct flange is rubber sealed.
- Air duct connection through matching flanges **BLAUFAST RKF** (available as special accessories).
- Unused openings must be capped with **BLAUFAST RSP**.
- Internally sound-insulated.

	Model	ØD [mm]	ØD1 [mm]	L [mm]	A [mm]	H [mm]
DN63	BlauFast SR 200/63x15 01	54.5	199	500	600	302
DN75	BlauFast SR 200/75x15 01	67	199	500	600	302

BlauFast SR 200/63x15 01

Air capacity [m³/h]	Quantity of connected air ducts	Air supply, air resistance [Pa]	Air exhaust, air resistance [Pa]
25	1	2.6	1.6
50	2	2.8	1.8
75	3	3.2	2.1
100	4	3.8	2.6
125	5	4.5	3.3
150	6	5.4	4.0
175	7	6.4	4.9
200	8	7.6	6.0
225	9	9.0	7.2
250	10	10.5	8.5
275	11	12.2	10.0
300	12	14.0	11.6
325	13	16.0	13.3
350	14	18.2	15.2
375	15	20.5	17.3

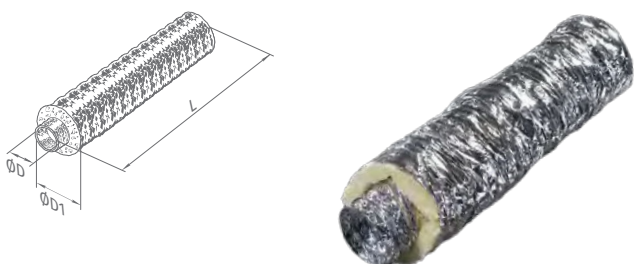
BlauFast SR 200/75x15 01

Air capacity [m³/h]	Quantity of connected air ducts	Air supply, air resistance [Pa]	Air exhaust, air resistance [Pa]
25	1	2.6	1.6
50	2	3.0	1.9
75	3	3.5	2.4
100	4	4.3	3.1
125	5	5.4	4.0
150	6	6.6	5.1
175	7	8.1	6.4
200	8	9.9	8.0
225	9	11.8	9.7
250	10	14.0	11.6
275	11	16.4	13.7
300	12	19.1	16.0
325	13	22.0	18.5
350	14	25.1	21.3
375	15	28.4	24.2

## ACCESSORIES

### FLEXIBLE INSULATED DUCT BLAUFLEX ISO N

Supply or exhaust ventilation systems of residential spaces.  
Connecting air handling units to air distribution boxes.



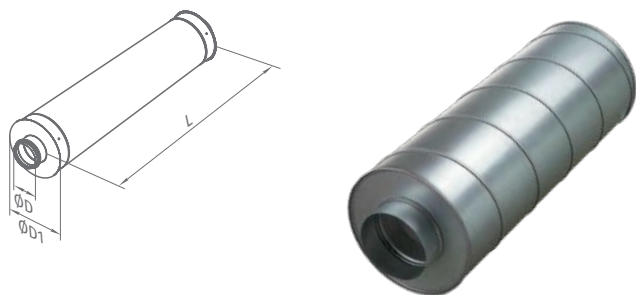
- The duct is made of aluminum foil and laminated with polyether film.
- The duct is fixed to the spigots using the clamps or the ALT mounting tape.

Model	ØD [mm]	ØD1 [mm]	L [mm]
BlauFlex Iso N/127/7.6	127	152	7.6
BlauFlex Iso N/152/7.6	152	177	7.6
BlauFlex Iso N/162/7.6	162	187	7.6
BlauFlex Iso N/203/7.6	203	228	7.6

Product item	BLAUFLEX ISO N
Size range [mm]	127; 162; 203;
Air duct base	Metallized polyester film (45 µm)
Air duct wire	Steel spring, 0.8-1.5 mm thick
Insulation	Mineral wool, 25 mm
Outer sleeve	Metallized polyester film (45 µm)
Temperature range [°C]	from -30 to +120
Standard length [m]	7.6
Available lengths (cutting) [m]	7.6
Air speed [m/s]	300
Maximum operating pressure [Pa]	3000

### SILENCER SD

Applied for noise absorption produced during the ventilating equipment operation and spread along the ducting systems.



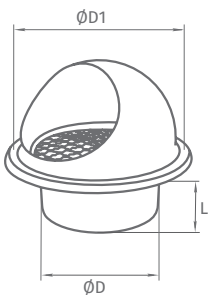
- The galvanized steel casing of the SD silencer is filled with flame-proof sound insulating material and equipped with protecting covering against fiber blowing-out.
- The silencers are equipped with connecting flanges with rubber sealing for airtight connection to the air ducts tape.

Model	ØD [mm]	ØD1 [mm]	L [mm]
SD 125/900	125	225	900
SD 150/900	149	250	900
SD 160/900	159	252	900
SD 200/900	198	318	900

## METAL HOOD DECOR S ... HK

Decoration of supply  
and exhaust ventilation outlets.

- Made of stainless steel.
- Equipped with a protective grid.
- Rubber seals for tight contact to the wall.
- Fixing with screws.

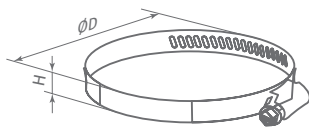


Model	Cross-sectional area [cm <sup>2</sup> ]	ØD [mm]	ØD1 [mm]	L [mm]
Decor S 122 HK	82	120	165	52
Decor S 152 HK	126	145	192	62
Decor S 162 HK	135	155	192	62
Decor S 202 HK	178	195	253	73

## CLAMP K ... ZN

Connecting flexible insulated ducts to  
spigots of air handling units and to air  
distribution boxes.

- Made of galvanized steel.

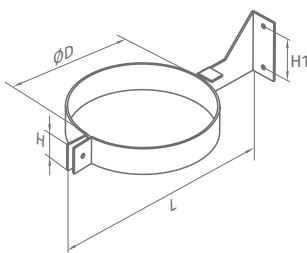


Model	ØD [mm]	H [mm]
K 125 Zn	110-130	9
K 150 Zn	140-160	9
K 160 Zn	150-170	9
K 200 Zn	190-210	9

## METAL CLAMP KZH

Connecting flexible insulated ducts  
to walls or ceilings.

- The clamps are made of galvanized steel strip with the layer of microporous rubber for vibration damping.



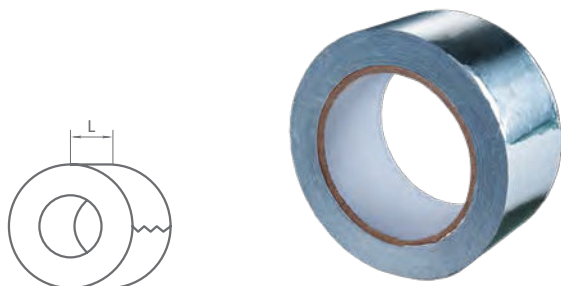
Model	ØD [mm]	H [mm]	H1 [mm]	L [mm]
KZH 125	125	30	50	229
KZH 150	150	30	50	254
KZH 160	160	30	50	264
KZH 200	200	30	50	304



### ALUMINIUM MOUNTING TAPE

#### A-BAND 050/10

Protection against external impacts and sealing of connections of flexible insulated ducts to other system elements.



- Made of aluminium and PET foil covered with glue layer.
- The tape is supplied in rolls and the glue layer is protected with an extra protecting layer.

Model	A-band 050/10
Length [m]	10
Width L [mm]	50
Total tape thickness [μm]	32
Breaking force	57 N / 25 mm <sup>2</sup>
Elongation at break [no less %]	3
Adhesiveness	8.25 N / 25 mm <sup>2</sup>
Temperature of application [°C]	+10...+40
Max. temp. of operating surface [°C]	+100
UV-resistance	yes

### BUTYL RUBBER SEALING TAPE

#### D-BAND 050/15

Sealing of duct/flange connection before casting.



- Made of butyl rubber.
- The tape is supplied in rolls and the glue layer is protected with an extra protecting layer.
- Waterproof.

Model	D-band 050/15
Length [m]	15
Width [mm]	50
Temperature of application [°C]	+5...+30
Operating temperature [°C]	-20...+70

Available from:  
[i-sells.co.uk](http://i-sells.co.uk)



AVAILABLE ON

**i-sells.co.uk**  
The UK's Leading Ducting  
And Ventilation Supplier



**BLAUBERG**  
Ventilatoren

Available from:  
i-sells.co.uk

Blauberg UK  
Unit E, 99 Boston Road  
Beaumont Leys  
Leicestershire  
LE4 1AW  
0116 216 0650

info@blauberg.co.uk  
www.blauberg.co.uk  
www.blauberg-group.com

Technical changes reserved.  
Illustrations and texts are non-binding.

01/2018